

PART OF THE SE.1/4, OF SECTION 8, T.6N., R.2W., S.L.B. & M.
OPHEIKENS SUBDIVISION

661

TAXING UNIT: 516

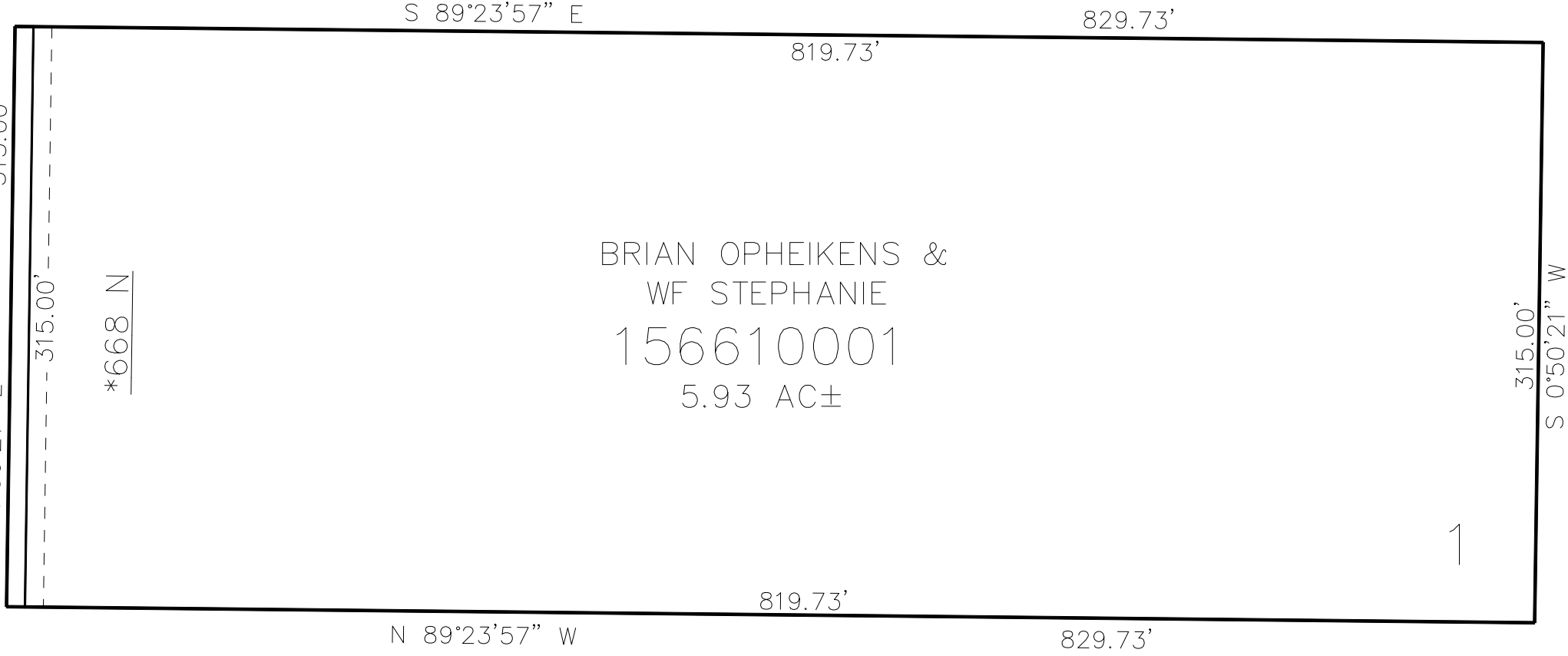
IN WEBER COUNTY
SCALE 1" = 80'

SEE PAGE 27-2

4700 WEST ST

SEE PAGE 27-2

SEE PAGE 27-2



SEE PAGE 27-2

*ADDRESS AFFIDAVIT E#2963109

10' UTILITY & DRAINAGE EASEMENTS EACH
SIDE OF PROPERTY LINES AS INDICATED
BY DASHED LINES EXCEPT AS OTHERWISE
SHOWN.

FOR COMPLETE ENG DATA SEE
ORIGINAL DEDICATION PLAT IN
BOOK 83, PAGE 48 OF RECORDS.